

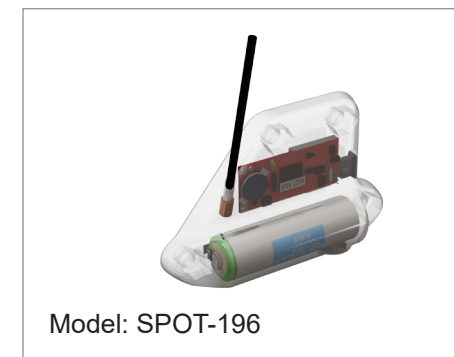
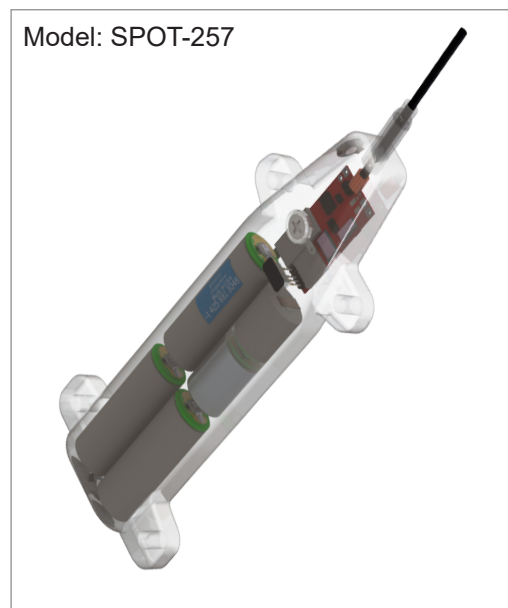
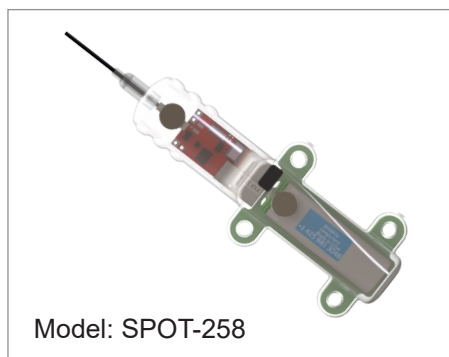
SHARK TAG SUITE SPECIFICATIONS

PG 1 OF 2

Tag Family	Model	Argos	Fastloc®	Depth	Temperature	Light Level	Life (days) ¹	L x W x H (mm)	Weight (g)
SPOT	SPOT-196	✓			✓		300	81 x 51 x 19	49
SPOT	SPOT-257	✓			✓		1290	162 x 57 x 20	160
SPOT	SPOT-258	✓			✓		300	106 x 45 x 19	53
SPOT	SPOT-F-338	✓	✓		✓		140	109 x 53 x 21	81

1) The above estimated lives are calculated assuming 250 transmissions and 24 Fastloc® attempts per day. Utilizing the Wet/Dry sensor and duty cycling, the life can be extended.

Finmount tags available with heavy grade 7x7 nitinol antenna or standard weight 3-layer nitinol antenna.



SHARK TAG SUITE SPECIFICATIONS

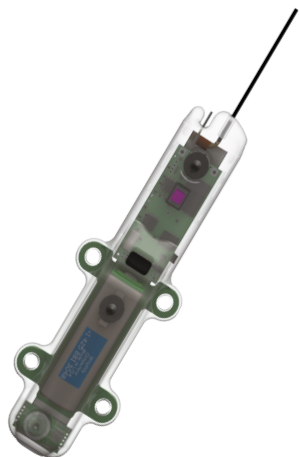
PG 2 OF 2

Tag Family	Model	Argos	Fastloc®	Depth	Temperature	Light Level	Life (days) ¹	L x W x H (mm)	Weight (g)
SPLASH	SPLASH-312	✓		✓	✓	✓	110	133 X 44 X 19	74
SPLASH	SPLASH-336	✓		✓	✓	✓	110	108 x 41 x 21	75
SPLASH	SPLASH-346	✓		✓	✓	✓	450	172 x 84 x 23	205

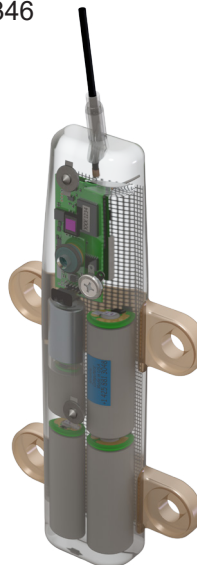
1) The above estimated lives are calculated assuming 250 transmissions and 24 Fastloc® attempts per day. Utilizing the Wet/Dry sensor and duty cycling, the life can be extended.

Finmount tags available with heavy grade 7x7 nitinol antenna or standard weight 3-layer nitinol antenna.

Model: SPLASH-312



Model: SPLASH-346



Model: SPLASH-336

